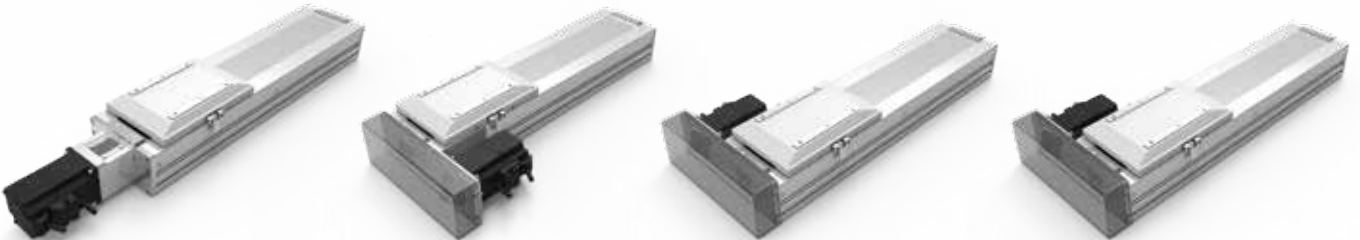
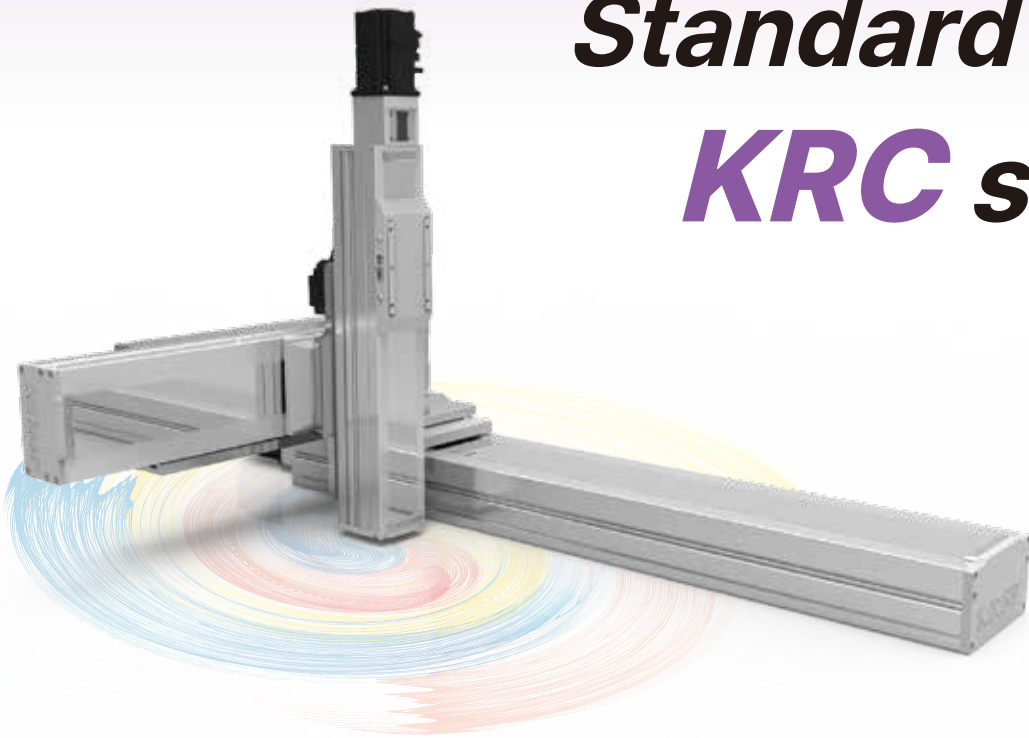


Standard Robot *KRC series*



Straight, Left, Right, Under 타입 준비

고강성 Body & Compact 구조

$\pm 0.02\text{mm}$ 의 고정도 반복위치 정밀도

밀폐형 구조로 이물질 침투방지

커플링 견시창, 투시형 폴리/모터 커버로 유지보수 및 시인성 향상

내부 볼스크류 및 LM에 개별적으로 그리스 주입이 가능한구조

진공 흡입 장치를 적용하여 파티클 흡입 및 배출 가능

KRC060

KR C 060 - S - 100 L - 10 B G** - B R1 - E1

① ② ③ ④ ⑤ ⑥ ⑦ ⑧ ⑨ ⑩ ⑪



① 형식 Type

C	Clean Robot, Ball Screw Type
---	------------------------------

② 본체 사이즈 Body Size

060	60mm
-----	------

③ 형상 Shape

S	Motor 직렬 (Straight)
L	Motor 병렬 (Parallel Left)
R	Motor 병렬 (Parallel Right)
U	Motor 병렬 (Parallel Under)

④ 이송거리 Stroke, In increment of 50mm

Ball Screw Spec	ST (mm)	200	500	800	1000
L : 1205					
N : 1210					
H : 1220					

⑤ 속도 Speed, Motor 3000rpm

L	250mm/s
N	500mm/s
H	1000mm/s

※ 볼나사의 회전수가 높아지면 축의 고유 진동수에 의한 공진 발생과 볼나사 축의 회전 원심력에 의한 내부 볼 손상 및 리턴부 손상발생으로 위험속도를 계산하여 이송거리에 따른 최고 사용 속도를 정합니다.
If the ball screw speed is raised, the rotary generates a resonance and the circular rotation of the inner ball can cause damage to the inner ball. Therefore, calculate the risk velocity and determine the maximum speed according to the transfer distance.

⑧ 감속기 Reduction Gear

None	Without Reduction Gear(Standard)
G**	With Reduction Gear
**	Reduction Gear Ratio 03~10

⑥ 모터 용량 Motor Capacity

10	100W
----	------

⑦ 브레이크 부착 Motor Brake

None	Without Brake
B	With Brake

⑨ 로봇 색상 Robot Color Option

None	White(Standard)
B	Black Anodizing

⑩ 표면처리 Surface Treatment

None	Without Surface Treatment
R1	LM Rail-Raydent
R2	LM Rail + Block-Raydent
S1	Screw Shaft-Raydent
S2	Screw Shaft + Nut-Raydent
RS1	LM Rail & Screw Shaft-Raydent
RS2	LM Rail + Block & Screw Shaft + Nut-Raydent

⑪ 센서 Sensor

None	Without Sensor(Standard)
E1	SUNX(PM-Y65)
E2	OMRON(EE-SX674A)

사양 Specifications


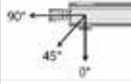

공통사양 Common Specifications

Stroke Range(mm)	100 ~ 800
Positioning Repeatability(mm)	±0.02
Drive System(mm)	Ball Screw Ø12
Guide	1 Way 15V - 2UU
Main Base & Slide	Aluminum Profile, Soft White Anodizing
Main & Side Cover	Steel Band&Aluminum Profile, Soft White Anodizing

최고속도 및 부하하중 Max Speed&Payload

Ball Screw Specifications	Max Speed		AC Servo Motor 100W	
	Mark	mm/s	Horizontal	Vertical
1205	L	250	12kg	8kg
1210	N	500	12kg	5kg
1220	H	1000	10kg	1kg
Estimated Condition	Stroke : 500mm Speed : Max Speed Acceleration : 0.2sec Servo Motor Rotate : 3000rpm			

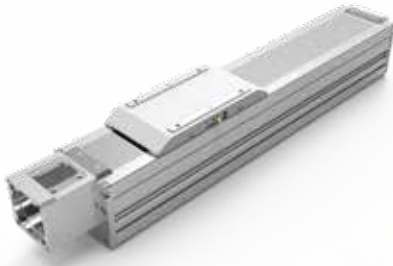
허용 이격 거리 Allowable Overhang Distance

Installation Types Load capacity		Setting Angle	Allowable Overhang Distance(mm)			
			3kg	6kg	9kg	12kg
Horizontal Use		0°	250	140	90	65
		45°	190	95	65	50
		90°	1500	1000	700	500
Wall Mount Use		0°	1000	340	80	-
		45°	170	45	2	-
		90°	150	35	2	-
Vertical Use		0°	185	80	45	27
		45°	105	45	25	15
		90°	250	100	60	35
Estimated Condition	Stroke : 500mm Speed : 500mm/sec Acceleration : 0.2sec Life in traveled distance : Static safety factor 15 and 3 years					

KRC080

KR C 080 - S - 100 L - 20 B G** - B R1 - E1

① ② ③ ④ ⑤ ⑥ ⑦ ⑧ ⑨ ⑩ ⑪



① 형식 Type

C	Clean Robot, Ball Screw Type
---	------------------------------

② 본체 사이즈 Body Size

080	80mm
-----	------

③ 형상 Shape

S	Motor 직렬 (Straight)
L	Motor 병렬 (Parallel Left)
R	Motor 병렬 (Parallel Right)
U	Motor 병렬 (Parallel Under)

④ 이송거리 Stroke, In increment of 50mm

Ball Screw Spec	ST (mm)	200	400	600	800	1000
L : 1505						
N : 1510						
H : 1520						
P : 1530						

⑤ 속도 Speed, Motor 3000rpm

L	250mm/s
N	500mm/s
H	1000mm/s
P	1500mm/s

※ 볼나사의 회전수가 높아지면 축의 고유 진동수에 의한 공진 발생과 볼나사 축의 회전 원심력에 의한 내부 볼 순환 이상 및 리턴부 손상발생으로 위험속도를 계산하여 이송거리에 따른 최고 사용 속도를 정합니다.

If the ball screw speed is raised, the rotary generates a resonance and the circular rotation of the inner ball can cause damage to the inner ball. Therefore, calculate the risk velocity and determine the maximum speed according to the transfer distance.

⑥ 모터 용량 Motor Capacity

10	100W
20	200W
40	400W

⑦ 브레이크 부착 Motor Brake

None	Without Brake
B	With Brake

⑨ 로봇 색상 Robot Color Option

None	White(Standard)
B	Black Anodizing

⑩ 표면처리 Surface Treatment

None	Without Surface Treatment
R1	LM Rail-Raydent
R2	LM Rail + Block-Raydent
S1	Screw Shaft-Raydent
S2	Screw Shaft + Nut-Raydent
RS1	LM Rail & Screw Shaft-Raydent
RS2	LM Rail + Block & Screw Shaft + Nut-Raydent

⑧ 감속기 Reduction Gear

None	Without Reduction Gear(Standard)
G**	With Reduction Gear
**	Reduction Gear Ratio 03~10

⑪ 센서 Sensor

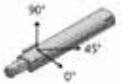
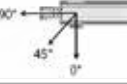

None	Without Sensor(Standard)
E1	SUNX(PM-Y65)
E2	OMRON(EE-SX674A)

사양 Specifications

공통사양 Common Specifications

Stroke Range(mm)	100 ~1000
Positioning Repeatability(mm)	±0.02
Drive System(mm)	Ball Screw Ø15
Guide	1 Way 20SB - 2UU
Main Base & Slide	Aluminum Profile, Soft White Anodizing
Main & Side Cover	Steel Band&Aluminum Profile, Soft White Anodizing

허용 이격 거리 Allowable Overhang Distance

Installation Types Load capacity		Setting Angle	Allowable Overhang Distance(mm)			
			5kg	10kg	15kg	20kg
Horizontal Use		0°	300	150	100	75
		45°	260	135	90	65
		90°	1500	1000	700	500
Wall Mount Use		0°	950	310	100	-
		45°	195	53	-	-
		90°	170	42	-	-
Vertical Use		0°	250	110	63	39
		45°	147	65	37	23
		90°	370	160	90	57
Estimated Condition	Stroke : 600mm Speed : 500mm/sec Acceleration : 0.2sec Life in traveled distance : Static safety factor 15 and 3 years					

최고속도 및 부하하중 Max Speed&Payload

Ball Screw Specifications	Max Speed		AC Servo Motor 100W		AC Servo Motor 200W		AC Servo Motor 400W	
	Mark	mm/s	Horizontal	Vertical	Horizontal	Vertical	Horizontal	Vertical
1505	L	250	20kg	13kg	20kg	20kg	20kg	20kg
1510	N	500	20kg	6kg	20kg	18kg	20kg	20kg
1520	H	1000	14kg	2kg	20kg	5kg	20kg	13kg
1530	P	1500	-	-	6kg	1kg	19kg	8kg
Estimated Condition	Stroke : 600mm Speed : Max Speed Acceleration : 0.2sec Servo Motor Rotate : 3000rpm							

KRC120

KR C 120 - S - 100 L - 20 B G** - B R1 - E1

① ② ③ ④ ⑤ ⑥ ⑦ ⑧ ⑨ ⑩ ⑪



① 형식 Type

C	Clean Robot, Ball Screw Type
---	------------------------------

② 본체 사이즈 Body Size

120	120mm
-----	-------

③ 형상 Shape

S	Motor 직렬 (Straight)
L	Motor 병렬 (Parallel Left)
R	Motor 병렬 (Parallel Right)
U	Motor 병렬 (Parallel Under)

④ 이송거리 Stroke, In increment of 50mm

Ball Screw Spec	ST (mm)	200	400	600	800	1000	1200
L : 1505							
N : 1510							
H : 1520							
P : 1530							

⑤ 속도 Speed, Motor 3000rpm

L	250mm/s
N	500mm/s
H	1000mm/s
P	1500mm/s

※ 볼나사의 회전수가 높아지면 축의 고유 진동수에 의한 공진 발생과 볼나사 축의 회전 원심력에 의한 내부 볼 순환 이상 및 리턴부 손상발생으로 위험속도를 계산하여 이송거리에 따른 최고 사용 속도를 정합니다.
If the ball screw speed is raised, the rotary generates a resonance and the circular rotation of the inner ball can cause damage to the inner ball. Therefore, calculate the risk velocity and determine the maximum speed according to the transfer distance.

⑧ 감속기 Reduction Gear

None	Without Reduction Gear(Standard)
G**	With Reduction Gear
**	Reduction Gear Ratio 03~10

⑥ 모터 용량 Motor Capacity

20	200W
40	400W

⑨ 로봇 색상 Robot Color Option

None	White(Standard)
B	Black Anodizing

⑦ 브레이크 부착 Motor Brake

None	Without Brake
B	With Brake

⑩ 표면처리 Surface Treatment

None	Without Surface Treatment
R1	LM Rail-Raydent
R2	LM Rail + Block-Raydent
S1	Screw Shaft-Raydent
S2	Screw Shaft + Nut-Raydent
RS1	LM Rail & Screw Shaft-Raydent
RS2	LM Rail + Block & Screw Shaft + Nut-Raydent

⑪ 센서 Sensor

None	Without Sensor(Standard)
E1	SUNX(PM-Y65)
E2	OMRON(EE-SX674A)

사양 Specifications

공통사양 Common Specifications

Stroke Range(mm)	100 ~ 1200
Positioning Repeatability(mm)	±0.02
Drive System(mm)	Ball Screw Ø15
Guide	2 Way 15W - 2UU
Main Base & Slide	Aluminum Profile, Soft White Anodizing
Main & Side Cover	Steel Band&Aluminum Profile, Soft White Anodizing

최고속도 및 부하중량 Max Speed&Payload

Ball Screw Specifications	Max Speed		AC Servo Motor 200W		AC Servo Motor 400W	
	Mark	mm/s	Horizontal	Vertical	Horizontal	Vertical
1505	L	250	50kg	33kg	50kg	33kg
1510	N	500	50kg	17kg	50kg	28kg
1520	H	1000	43kg	4kg	50kg	13kg
1530	P	1500	5kg	-	18kg	7kg
Estimated Condition	Stroke : 600mm Speed : Max Speed Acceleration : 0.2sec Servo Motor Rotate : 3000rpm					

허용 이격 거리 Allowable Overhang Distance

Installation Types Load capacity	Setting Angle	Allowable Overhang Distance(mm)			
		20kg	30kg	40kg	50kg
Horizontal Use	90°	345	235	180	145
	45°	285	190	145	120
	0°	1500	1000	700	500
Wall Mount Use	90°	845	510	340	240
	45°	250	160	115	80
	0°	260	145	85	50
Vertical Use	90°	170	95	65	45
	45°	98	58	38	26
	0°	245	145	95	65
Estimated Condition	Stroke : 600mm Speed : 500mm/sec Acceleration : 0.2sec Life in traveled distance : Static safety factor 15 and 3 years				

KRC160

KR C 160 - S - 100 L - 40 B G** - B R1 - E1

① ② ③ ④ ⑤ ⑥ ⑦ ⑧ ⑨ ⑩ ⑪



① 형식 Type

C	Clean Robot, Ball Screw Type
---	------------------------------

② 본체 사이즈 Body Size

160	160mm
-----	-------

④ 이송거리 Stroke, In increment of 50mm

Ball Screw Spec	ST (mm)	200	400	600	800	1000	1400
L : 2005							
N : 2010							
H : 2020							
P : 2030							
S : 2040							

③ 형상 Shape

S	Motor 직렬 (Straight)
L	Motor 병렬 (Parallel Left)
R	Motor 병렬 (Parallel Right)
U	Motor 병렬 (Parallel Under)

⑤ 속도 Speed, Motor 3000rpm

L	250mm/s
N	500mm/s
H	1000mm/s
P	1500mm/s
S	2000mm/s

※ 볼나사의 회전수가 높아지면 축의 고유 진동수에 의한 공진 발생과 볼나사 축의 회전 원심력에 의한 내부 볼 순환 이상 및 리턴부 손상발생으로 위험속도를 계산하여 이송거리에 따른 최고 사용 속도를 정합니다.
If the ball screw speed is raised, the rotary generates a resonance and the circular rotation of the inner ball can cause damage to the inner ball. Therefore, calculate the risk velocity and determine the maximum speed according to the transfer distance.

⑧ 감속기 Reduction Gear

None	Without Reduction Gear(Standard)
G**	With Reduction Gear
**	Reduction Gear Ratio 03~10

⑥ 모터 용량 Motor Capacity

20	200W
40	400W
75	750W

⑦ 브레이크 부착 Motor Brake

None	Without Brake
B	With Brake

⑨ 로봇 색상 Robot Color Option

None	White(Standard)
B	Black Anodizing

⑩ 표면처리 Surface Treatment

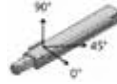
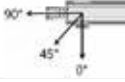

None	Without Surface Treatment
R1	LM Rail-Raydent
R2	LM Rail + Block-Raydent
S1	Screw Shaft-Raydent
S2	Screw Shaft + Nut-Raydent
RS1	LM Rail & Screw Shaft-Raydent
RS2	LM Rail + Block & Screw Shaft + Nut-Raydent

사양 Specifications

공통사양 Common Specifications

Stroke Range(mm)	100 ~ 1400
Positioning Repeatability(mm)	±0.02
Drive System(mm)	Ball Screw Ø20
Guide	2 Way 20W - 2UU
Main Base & Slide	Aluminum Profile, Soft White Anodizing
Main & Side Cover	Steel Band&Aluminum Profile, Soft White Anodizing

허용 이격 거리 Allowable Overhang Distance

Installation Types Load capacity		Setting Angle	Allowable Overhang Distance(mm)			
			40kg	50kg	60kg	70kg
Horizontal Use		0°	350	290	245	215
		45°	290	235	200	175
		90°	1500	1000	700	500
Wall Mount Use		0°	215	160	125	100
		45°	90	70	55	43
		90°	105	65	40	23
Vertical Use		0°	170	125	100	80
		45°	95	74	55	45
		90°	230	170	130	105
Estimated Condition	Stroke : 600mm Speed : 500mm/sec Acceleration : 0.2sec Life in traveled distance : Static safety factor 15 and 3 years					

최고속도 및 부하하중 Max Speed&Payload

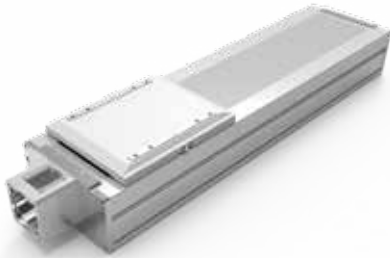
Ball Screw Specifications	Max Speed		AC Servo Motor 200W		AC Servo Motor 400W		AC Servo Motor 7500W	
	Mark	mm/s	Horizontal	Vertical	Horizontal	Vertical	Horizontal	Vertical
2005	L	250	70kg	38kg	70kg	38kg	70kg	38kg
2010	N	500	70kg	14kg	70kg	39kg	70kg	41kg
2020	H	1000	14kg	2kg	46kg	14kg	70kg	18kg
2030	P	1500	1kg	-	15kg	5kg	34kg	8kg
2040	S	2000	-	-	5kg	1kg	14kg	7kg

Estimated Condition Stroke : 600mm Speed : Max Speed Acceleration : 0.2sec
Servo Motor Rotate : 3000rpm

KRC200

KR C 200 - S - 100 L - 75 B G** - B R1 - E1

① ② ③ ④ ⑤ ⑥ ⑦ ⑧ ⑨ ⑩ ⑪



① 형식 Type

C	Clean Robot, Ball Screw Type
---	------------------------------

② 본체 사이즈 Body Size

200	200mm
-----	-------

③ 형상 Shape

S	Motor 직렬 (Straight)
L	Motor 병렬 (Parallel Left)
R	Motor 병렬 (Parallel Right)
U	Motor 병렬 (Parallel Under)

④ 이송거리 Stroke, In increment of 50mm

Ball Screw Spec	ST (mm)	200	400	600	800	1000	1400
L : 2005							
N : 2010							
H : 2020							
P : 2030							
S : 2040							

⑤ 속도 Speed, Motor 3000rpm

L	250mm/s
N	500mm/s
H	1000mm/s
P	1500mm/s
S	2000mm/s

※ 볼나사의 회전수가 높아지면 축의 고유 진동수에 의한 공진 발생과 볼나사 축의 회전 원심력에 의한 내부 볼 순환 이상 및 리턴부 손상발생으로 위험속도를 계산하여 이송거리에 따른 최고 사용 속도를 정합니다.

If the ball screw speed is raised, the rotary generates a resonance and the circular rotation of the inner ball can cause damage to the inner ball. Therefore, calculate the risk velocity and determine the maximum speed according to the transfer distance.

⑧ 감속기 Reduction Gear

None	Without Reduction Gear(Standard)
G**	With Reduction Gear
**	Reduction Gear Ratio 03~10

⑥ 모터 용량 Motor Capacity

40	400W
75	750W

⑦ 브레이크 부착 Motor Brake

None	Without Brake
B	With Brake

⑨ 로봇 색상 Robot Color Option

None	White(Standard)
B	Black Anodizing

⑩ 표면처리 Surface Treatment

None	Without Surface Treatment
R1	LM Rail-Raydent
R2	LM Rail + Block-Raydent
S1	Screw Shaft-Raydent
S2	Screw Shaft + Nut-Raydent
RS1	LM Rail & Screw Shaft-Raydent
RS2	LM Rail + Block & Screw Shaft + Nut-Raydent

⑪ 센서 Sensor

None	Without Sensor(Standard)
E1	SUNX(PM-Y65)
E2	OMRON(EE-SX674A)

사양 Specifications


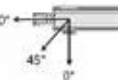

공통사양 Common Specifications

Stroke Range(mm)	100 ~ 1400
Positioning Repeatability(mm)	±0.02
Drive System(mm)	Ball Screw Ø20
Guide	2 Way 25W - 2UU
Main Base & Slide	Aluminum Profile, Soft White Anodizing
Main & Side Cover	Steel Band&Aluminum Profile, Soft White Anodizing

최고속도 및 부하중량 Max Speed&Payload

Ball Screw Specifications	Max Speed		AC Servo Motor 400W AC Servo Motor 750W			
	Mark	mm/s	Horizontal	Vertical	Horizontal	Vertical
2005	L	250	120kg	38kg	120kg	38kg
2010	N	500	120kg	38kg	120kg	41kg
2020	H	1000	45kg	13kg	89kg	18kg
2030	P	1500	14kg	4kg	33kg	8kg
2040	S	2000	4kg	-	13kg	6kg
Estimated Condition	Stroke : 600mm Speed : Max Speed Acceleration : 0.2sec Servo Motor Rotate : 3000rpm					

허용 이격 거리 Allowable Overhang Distance

Installation Types Load capacity		Setting Angle	Allowable Overhang Distance(mm)			
			60kg	80kg	100kg	120kg
Horizontal Use		0°	470	360	290	250
		45°	380	290	235	200
		90°	1500	1000	700	500
Wall Mount Use		0°	1000	780	560	430
		45°	345	255	205	160
		90°	340	220	155	105
Vertical Use		0°	125	85	58	40
		45°	70	45	30	23
		90°	165	110	75	53
Estimated Condition	Stroke : 600mm Speed : 500mm/sec Acceleration : 0.2sec Life in traveled distance : Static safety factor 15 and 3 years					